



Cobra Electronics Europe Limited
Dungar House, Northumberland Avenue
Dun Laoghaire, County Dublin, Ireland

MR F55/F75 EU
Private Channel Programmer
Version 1.2

User's Guide

1. Introduction

This programming kit is used to program the private channels for our Marine Radios – MR F55 EU and MR F75 EU in different European countries. It can also be used to reset the User MMSI and Group MMSI stored in the models.

2. Equipment List

PC with open Serial Port and following minimum requirements:
Win 98 SE, Me, 2000 or XP
32 Mb RAM
PII with 266 MHz processor
Cobra channel programming kit and application CD



3. Installing PC Software

- Put the Installation CD into the CD ROM Drive
- Open the “EU MR-F75 Programmer Setup 1.2” folder inside the CD.
- Double click the “setup.exe” icon to execute the installation software
- Follow the instructions displayed to complete the installation.

4. Connecting the Channel Programming Cable

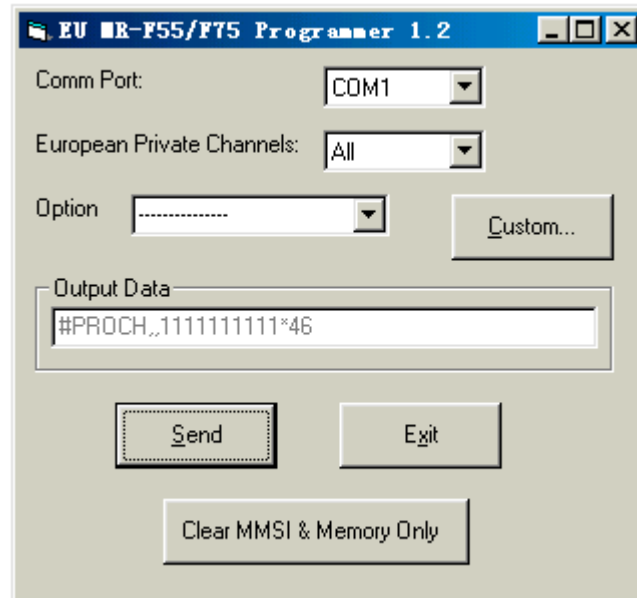
- Connect 9 pin connector on the programming cable to the serial port on your PC.
- Connect the other end of the adapter to the GPS input on the back of your Cobra VHF radio



5. Program the Channels

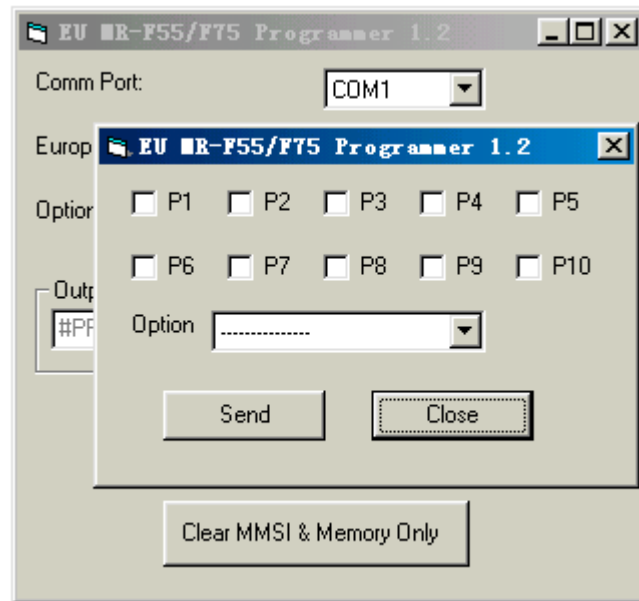
- Start the Programming software by clicking the following menu item on PC - Start->Programs->Cobra Electronics->EU MR-F55_F75 Programmer 1.2

- b) The main window of the program is displayed as follows:



- c) Choose the COM port used and the Country to be programmed into the radio by selection the drop down list boxes.
- d) If the User MMSI and Group MMSI have to be cleared at the same time when the private channels are being programmed, select the “Clear MMSI” item in the “Option” drop down list box.
- e) If the Memory (including the individual directory & call log) have also to be cleared at the same time when the private channels are being programmed, select the “Clear MMSI & Memory” item in the “Option” drop down list box.
- f) To enter test mode, press the DOWN button and M SCAN/SCAN button simultaneously on the Marine radio when turning on the power. Press UIC button in test mode to enter program mode. In program mode, the radio will accept commands sent from PC. Click the “Send” button on PC to send the new settings to the radio to commit the change. The radio will quit program mode and return to test mode if the command is received successfully.
- g) To clear the User MMSI, the Group MMSI and Memory without affecting the private channels settings, click the “Clear MMSI & Memory Only” button on PC when the radio is in program mode.

- h) If it is necessary to customize or to enable/disable individual private channels, click the “Custom...” button to display the Custom Dialog box as follows.



- i) Click the checkboxes on the Custom dialog box to select the private channels desired.
- j) Set the Marine radio in program mode and then click the “Send” button on the PC to commit the change.
- k) If the User MMSI and Group MMSI have to be cleared at the same time, choose the “Clear MMSI” item in the “Option” drop down list box before clicking the “Send” button.
- l) If the Memory (including the individual directory & call log) have also to be cleared at the same time when the private channels are being programmed, select the “Clear MMSI & Memory” item in the “Option” drop down list box before clicking the “Send” button.
- m) Click “Close” button on PC to close the Custom dialog box.