

Waypoint **Managment** Guide

DRAFT

531815-1_A



Accessory Manual

Thank You!

Thank you for choosing Humminbird®, America's #1 name in Fishfinders. Humminbird® has built its reputation by designing and manufacturing top-quality, thoroughly reliable marine equipment. Your Humminbird® accessory is designed for trouble-free use in even the harshest marine environment. In the unlikely event that your Humminbird® accessory does require repairs, we offer an exclusive Service Policy - free of charge during the first year after purchase, and available at a reasonable rate after the one-year period. For complete details, see the separate warranty card included with your accessory. We encourage you to read this operations manual carefully in order to get full benefit from all the features and applications of your Humminbird® product.

Contact our Customer Resource Center at **1-800-633-1468** or visit our Web site at **humminbird.com**.

WARNING! *This device should not be used as a navigational aid to prevent collision, grounding, boat damage, or personal injury. When the boat is moving, water depth may change too quickly to allow time for you to react. Always operate the boat at very slow speeds if you suspect shallow water or submerged objects.*

WARNING! *The electronic chart in your Humminbird® unit is an aid to navigation designed to facilitate the use of authorized government charts, not to replace them. Only official government charts and notices to mariners contain all of the current information needed for the safety of navigation, and the captain is responsible for their prudent use.*

WARNING! *Disassembly and repair of this electronic unit should only be performed by authorized service personnel. Any modification of the serial number or attempt to repair the original equipment or accessories by unauthorized individuals will void the warranty.*

WARNING! *This product contains chemicals known to the State of California to cause cancer and/or reproductive harm.*

NOTE: *Some features discussed in this manual require a separate purchase, and some features are only available on international models. Every effort has been made to clearly identify those features. Please read the manual carefully in order to understand the full capabilities of your model.*

NOTE: ~~The Ethernet accessory~~ is compatible with many Humminbird® models, and every effort has been made to note the differences between the models and functions throughout this manual. The illustrations in this manual may look different than your display, but your model will operate in a similar way.

700 Series™, 800 Series™, 900 Series™, 1100 Series™, Cannon®, CannonLink™, Contour XD™, Down Imaging™, DualBeam PLUS™, Fish ID+™, HumminbirdPC™, Humminbird®, InterLink™, QuadraBeam PLUS™, RTS™ Window, Side Imaging®, SwitchFire™, Structure ID®, UniMap™, WeatherSense®, WhiteLine™, and X-Press™ Menu are trademarked by or registered trademarks of Humminbird®.

Table of Contents

| | |
|---|-----------|
| Overview | 1 |
| Basic Operations | 2 |
| Open the Waypoints, Routes, Tracks (WRT) Dialog Box | 3 |
| What's on the Waypoints, Routes, Tracks (WRT) Dialog Box | 4 |
| Customize a Group, Waypoint, Route, or Track | 6 |
| Groups | 7 |
| Create a New Group | 7 |
| Set a Group as the Default Directory | 8 |
| Open a Group Submenu | 9 |
| Edit a Group | 9 |
| Add/Remove Items | 10 |
| Waypoints | 11 |
| Display the Waypoints Submenu | 12 |
| Edit a Waypoint | 13 |
| Create a New Waypoint | 13 |
| Program the Waypoint Icon & Category Default | 14 |
| Set the Icon for Multiple Select Waypoints | 16 |
| Routes | 17 |
| Display the Routes Submenu | 17 |
| Create a New Route | 19 |
| Edit a Route | 20 |
| Add/Remove Waypoints | 21 |
| Edit the Waypoint Order in a Route | 22 |
| Start Route Navigation | 23 |
| Tracks | 24 |
| Open a Track Submenu | 24 |
| Edit a Saved Track | 25 |

Table of Contents

| | |
|---|-----------|
| Options | 26 |
| Open the Options Submenu | 26 |
| Organize | 27 |
| Duplicate or Move | 27 |
| Create a Copy and Save as a New Item. | 27 |
| Export ALL Navigation Items. | 28 |
| Export Selected Navigation Items. | 28 |
| Contact Humminbird® | 29 |

DRAFT

Overview

Our waypoint management software is designed to help you to manage your navigation data. The information in this guide replaces some of the instructions in your Humminbird® operations manual, specifically, how to edit and organize waypoint, route, and track information. You can also save your navigation items in groups, sort, copy, and export your items.

HumminbirdPC™



NOTE: Your Humminbird® model may not look exactly like the illustrations shown in this guide, however your Waypoint Management software will work in the same way.

We recommend that you read this guide completely to understand the waypoint management features. Here are some ways you can use waypoint management:

1. Before you hit the water, create a new group.
2. Set the group as the default so that new waypoints, routes, and tracks are saved to your group.
3. Choose the default icon and category for new waypoints.
4. Customize any saved navigation items, and you can also create new routes or waypoints from scratch. You can continue to organize your navigation items by copying or moving your favorite waypoints, routes, or tracks into other groups too.
5. Export your navigation data to an optional SD card and view it in HumminbirdPC™.

NOTE: To download the HumminbirdPC™ software, visit our web site at humminbird.com.

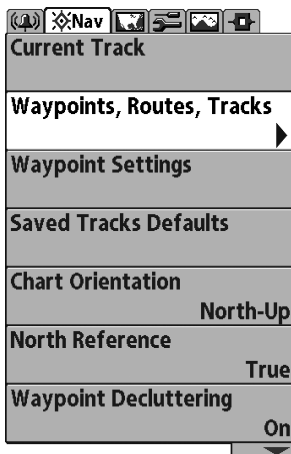
Basic Operations

While you are navigating, you can mark a waypoint or save the current track or route. The WRT dialog box allows you to build on these functions. Following are the basic operations for marking a waypoint or saving a current route or track:

Mark a Waypoint: Press the MARK key and a waypoint will be saved at the boat's location. To save a waypoint at a cursor position (Chart or Combo Views), use the 4-WAY Cursor Control key to move the active cursor to a position on the chart and press the MARK key. To create a new waypoint from scratch, specify the latitude and longitude, and edit the waypoint name, see *Waypoints*.

Save the Current Route: After navigation, press the MENU key once, and select Save Current Route from the X-Press Menu. Press the RIGHT Cursor key to confirm. To create a new route from scratch or edit a saved route, see *Routes*.

Save the Current Track: After navigation, press the MENU key once and select Save Current Track from the X-Press Menu. Press the RIGHT Cursor key to confirm. To edit track information, see *Tracks*.



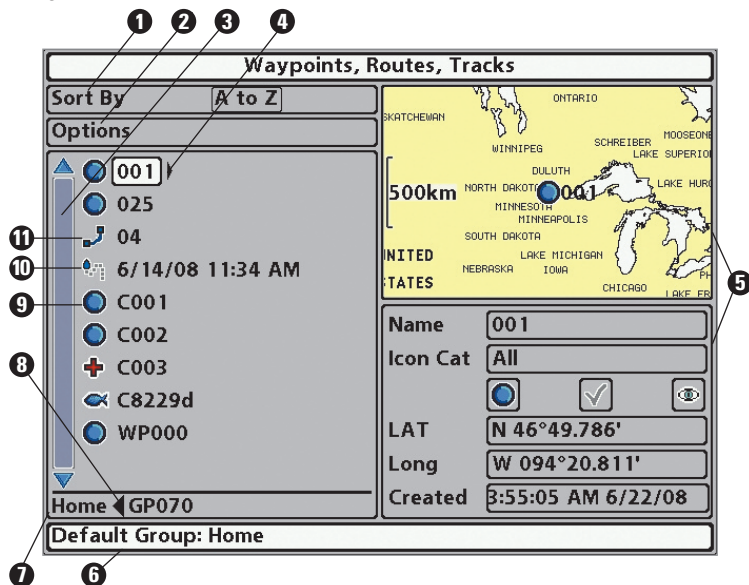
Opening the WRT Dialog Box

Open the Waypoints, Routes, Tracks (WRT) Dialog Box

1. Press the MENU key twice to open the Main Menu, and press the RIGHT Cursor key until the Navigation Menu Tab is selected.
2. Press the DOWN Cursor key to choose Waypoints, Routes, Tracks, and press the RIGHT Cursor key to open the dialog box.

What's on the Waypoints, Routes, Tracks (WRT) Dialog Box

Use the **Waypoints, Routes, Tracks (WRT) dialog box** to manage your navigation data.



- 1 Sort By:** Highlight Sort By, and press the RIGHT Cursor key repeatedly to choose a sorting option. The selected sort option will change the order of the waypoints, routes, and tracks (A - Z, Z - A, Newest, Oldest, Distance, Icon). To start a more specific search, see **Options**.
- 2 Options:** Provides a submenu so that you can set the default Group, create new navigation items (groups, waypoints, routes), and select and edit several items at once. Select Search By to search by Name, Distance, Date, Icon, or Icon Category. The Options field will also change to show related menus (such as Save or Paste).

NOTE: As you scroll through the WRT dialog box, press the EXIT key to select this field.


NOTE: As you scroll through the WRT dialog box, press the EXIT key to select the Options field quickly. Press the EXIT key again to close the dialog box.

- ③ **Scroll and View:** Press the UP or DOWN Cursor keys to browse through the items (waypoints, routes, tracks, and groups). The active item is highlighted in white.
- ④ **Submenu:** After an item is highlighted, press the RIGHT Cursor key to view the submenu.
- ⑤ **Preview Window:** As you scroll, the selected item's information is displayed on the right side of the WRT dialog box. Press the +/- Zoom keys to view the position closer or farther away in the preview window.
- ⑥ **Information:** Displays the default group. This field also changes to display instructions.
- ⑦ **Directory:** Shows the directory structure and the current group. The above illustration shows group GP070 as the current group. You would need to press the LEFT Cursor key once to move back to the Home Group, which is the highest level group in the directory. See ***What's on the WRT Dialog Box: Arrows*** for more information.
- ⑧ **Arrows:** When arrows are displayed on a menu option or on a dialog box, additional information or submenus are available. If the arrow points to the right, press the RIGHT Cursor key (to open a submenu or activate a menu option). If the arrow points to the left (for the directory, dialog box, or menu options), press the LEFT Cursor key.
- ⑨ **Waypoint Icon:** The blue circle icon is the default waypoint icon. Waypoint names are alphanumeric and begin with WP. To change the icon or name for an individual waypoint, see ***Waypoints: Edit a Waypoint***. To set a default icon for all new waypoints, see ***Waypoints: Program the Waypoint Icon & Category Default***. If the waypoint is saved with a snapshot or recording file, see the Snapshot and Recording View on your control head to view the snapshot or recording.
- ⑩ **Track Icon:** Track names are saved with a date/time stamp and can be edited. The track icon cannot be changed.
- ⑪ **Route Icon:** Route names are alphanumeric and begin with R. To change the Route name, see ***Routes: Edit a Route***. The route icon cannot be changed.

Customize a Group, Waypoint, Route, or Track

Whether you are creating a new navigation item or editing it, a dialog box will open so that you can edit the fields. You can use the same steps to customize the group, waypoint, route, or track information fields. The available fields will vary with the dialog box. You will refer back to this section frequently throughout the guide.

Customizing Information

| Edit Waypoint | |
|-----------------------------|---|
| Name | fuel |
| Icon Category | Supplies |
| Icon |  |
| Shared | <input checked="" type="checkbox"/> |
| Visible | <input checked="" type="checkbox"/> |
| Latitude | N 46°49.786' |
| Longitude | W 094°20.811' |
| Save | |
| Created: 3:55:05 AM 6/22/08 | |

Select a Field: Use the 4-WAY Cursor Control key to move from field to field, and the UP and DOWN Cursor keys to change values within a field.

Name, Latitude, and Longitude fields: Press the UP or DOWN Cursor keys to change the letter or number. All upper and lower case letters are available, as well as digits 0-9 and some punctuation characters.

Icons, Shared, Visible, or Style fields: Press the UP or DOWN Cursor keys to change the icon used to represent the waypoint on the Combo and Chart Views, set if the item is shared or locked (InterLink™ optional-purchase accessory), and whether the item is shown or hidden on Combo or Chart Views.



Shared across InterLink™



Visible on Chart Views



Locked (not shared)
across InterLink™



Hidden on Chart Views



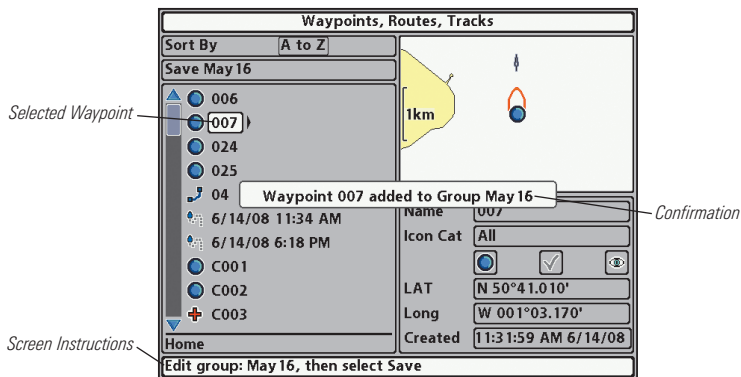
Groups

Groups are a great way to organize your routes, waypoints, or tracks in one set. Some anglers prefer to group their navigation items by trip, fish-type, body of water, or time of day. New Group names are alphanumeric and begin with GP, but you can edit the name and other settings as well.

Create a New Group

1. **Select Save Location:** In the WRT dialog box, choose where you want to save the new group. Home is the highest level group, or the main directory, in the the WRT dialog box. The current group is where the new data will be saved.
2. Select Options > New > New Group.
3. **Create New Group Dialog Box:** Use the 4-WAY Cursor Control key to set the available fields (see *Customize a Group, Waypoint, Route, or Track*).
4. **Add Items:** Select Add Items and press the RIGHT Cursor key. The New Group dialog box will close so you can select items from the WRT dialog box. Press the UP or DOWN Cursor keys to choose a waypoint, route, or track, and press the RIGHT Cursor key to add it to the group. Repeat as needed. See the illustration *Adding a Waypoint to the Group*.

Adding a Waypoint to the Group



NOTE: When you add an item to a group, it is an “instance” or a duplicate. If you make changes to the instance, the changes will be made to all instances. For example, if you change the waypoint icon for a waypoint that is saved in more than one group, the icon change will show up in all the groups.

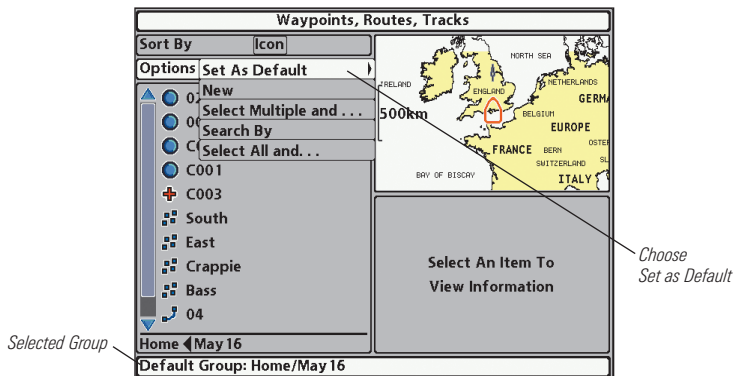
5. **Save:** When you are finished adding items to the group, press the EXIT key to select Save. Press the RIGHT Cursor key to confirm. You can also leave the group empty and add to it later.

Set a Group as the Default Directory

You might have many different groups in the WRT dialog box. To save all your *new* waypoints, routes, and tracks into a designated group, use the following steps:

1. From the WRT dialog box, select the group you want to use as the default, and press the RIGHT Cursor key.
2. Select Open from the submenu, and press the RIGHT Cursor key.
3. Select Options > Set as Default. All new waypoints, routes, and tracks will be saved directly into this group. See the illustration *Setting a Group as the Default Directory*.

Setting a Group as the Default Directory



Open a Group Submenu

1. From the WRT dialog box, select a group, and press the RIGHT Cursor key.
2. Press the DOWN or UP Cursor keys to choose from the submenu, and press the RIGHT Cursor key to select the menu option.

Open: Opens the group so that you can see the saved waypoints, routes, and tracks in the group.

Add/Remove: Copies waypoints, routes, or tracks into the group, or deletes items from the Group.

Edit: Opens the Edit Group dialog box. See *Groups: Edit a Group* for details.

Delete: Deletes the group from the WRT dialog box.

Move: Relocates the group from one location to another. See *Organize*.

Edit a Group

1. From the Group submenu, select Edit and press the RIGHT Cursor key.
2. Use the 4-WAY Cursor Control key to edit the available fields (see *Customize a Group, Waypoint, Route, or Track*).
3. Select Save, and press the RIGHT Cursor key to confirm your changes.

Editing a New Group

| Edit group | |
|-------------------------------------|-------------------------------------|
| Name | GP007 |
| Shared | <input checked="" type="checkbox"/> |
| Visible | <input type="checkbox"/> |
| <input type="button" value="Save"/> | |
| Created: 7:44:06 PM 6/14/08 | |

Edit Group dialog box

Add/Remove Items

1. From the Group submenu, select Add/Remove and press the RIGHT Cursor key. The submenu will close.
2. **Add:** Press the UP or DOWN Cursor keys to choose a waypoint, route, or track, and press the RIGHT Cursor key to add it to the group. Repeat as needed. You can add items from any other group in the WRT dialog box. See the illustration ***Adding a Waypoint to the Group***.

***NOTE:** When you add an item to a group, it is an “instance” or a duplicate. If you make changes to the instance, the changes will be made to all instances.*

Remove: Press the RIGHT Cursor key to open the selected group. Select an item in the group and press the RIGHT Cursor key to delete it from the group. Repeat as needed.

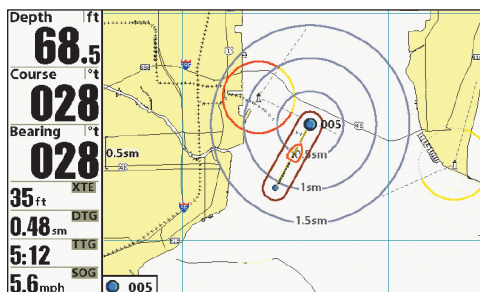
3. **Save:** When you are finished adding items or deleting items, press the EXIT key to select Save. Press the RIGHT Cursor key to confirm.



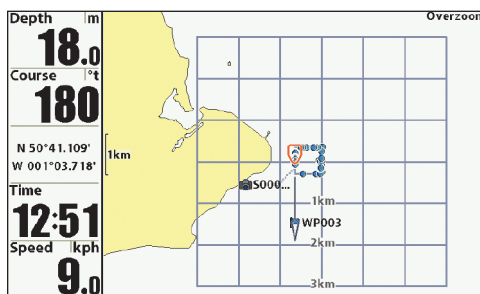
Waypoints

When you press the MARK key and create a new waypoint, an alphanumeric name is assigned to the waypoint. You can use the WRT dialog box to edit the saved waypoint or create a new waypoint from an empty file. You can also set a waypoint icon and category for all new waypoints.

Waypoint with Target



Waypoint with Grid



Display the Waypoints Submenu

The Waypoint submenu allows you to edit, delete, or copy a waypoint. You can also start navigation to a waypoint or apply a target or grid to the selected waypoint.

1. From the WRT dialog box, select a waypoint and press the RIGHT Cursor key.
2. Press the DOWN or UP Cursor keys to choose from the submenu, and press the RIGHT Cursor key to select the menu option.

Edit: Opens the Edit Waypoint dialog box (see *Waypoints: Edit a Waypoint*).

Delete: Deletes the waypoint. To remove the waypoint from the group, choose **Selected**. To delete the waypoint from all groups, choose **All Instances**.

Duplicate: Creates an instance of the waypoint and adds it to a new group or route in the WRT dialog box (see *Organize*).

Save As: Creates a new waypoint (based on the the selected waypoint) and opens a dialog box so you can change the new waypoint's name. To change the waypoint details, such as the position or icon category, see *Waypoints: Edit a Waypoint*.

Move: Relocates the waypoint from the selected group to a new group (see *Organize*).

Cursor To: Moves the active cursor to the waypoint position on the Chart View.

Go To: Starts navigation to the selected waypoint position.

Target: Applies a target to the selected waypoint in chart views.


Grid: Applies a grid to the selected waypoint in chart views.

NOTE: In any Chart or Combo View, you can also access the Edit, Delete, Target, or Grid options from the X-Press Menu.

Edit a Waypoint

1. Select Edit from the Waypoint submenu, and press the RIGHT Cursor key.
2. Use the 4-WAY Cursor Control key to edit the available fields (see *Customize a Group, Waypoint, Route, or Track*).
3. Select Save, and press the RIGHT Cursor key to confirm your changes.

Creating & Customizing a New Waypoint

| Create New Waypoint | |
|------------------------------|---|
| Name | WP006 |
| Icon Category | All |
| Icon |  |
| Shared | <input checked="" type="checkbox"/> |
| Visible | <input checked="" type="checkbox"/> |
| Latitude | N 50°40.977' |
| Longitude | W 001°03.169' |
| Save | |
| Created: 12:31:43 PM 6/14/08 | |

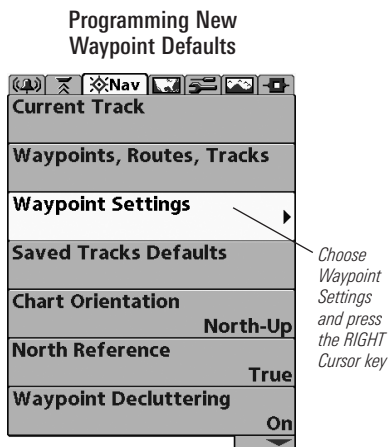
Create a New Waypoint

1. **Select Save Location:** In the WRT dialog box, choose where you want to save the new waypoint. Home is the highest level group, or the main directory, in the WRT dialog box. The current group or route is where the new data will be saved.
2. Select Options > New > New Waypoint.
3. **Create New Waypoint Dialog Box:** Use the 4-WAY Cursor Control key to set the available fields (see *Customize a Group, Waypoint, Route, or Track*).
4. Press the DOWN Cursor key to choose Save, and press the RIGHT Cursor key to confirm your changes.

Program the Waypoint Icon & Category Default

If you want to set the waypoint icon category or the waypoint icon for new waypoints, use the following instructions.

1. From the Navigation Main Menu, choose Waypoint Settings, and press the RIGHT Cursor key.




2. The waypoint settings can be set in the following ways:

Icon Category: Press the UP or DOWN Cursor keys to scroll through the available categories. The Default Waypoint Icon field also changes to match the selected category.

Default Waypoint Icon: Press the UP or DOWN Cursor keys to scroll through the available icons. The icon will change to match the Icon Category; however you can also choose an icon within a category. To see the most icon choices, set the Icon Category to All.

New Waypoint Icon: Select **Default**, and the system will automatically apply your settings to new waypoints. If you choose **Select**, each time you mark a waypoint, you can change the waypoint icon and category, or press the MARK key again to accept the current settings.

Setting the Waypoint Defaults

| Waypoint Settings | |
|-------------------------------------|---|
| Icon Category | <input type="button" value="All"/> |
| Default waypoint icon |  |
| New Waypoint Icon | <input type="button" value="Select"/> |
| <input type="button" value="Save"/> | |

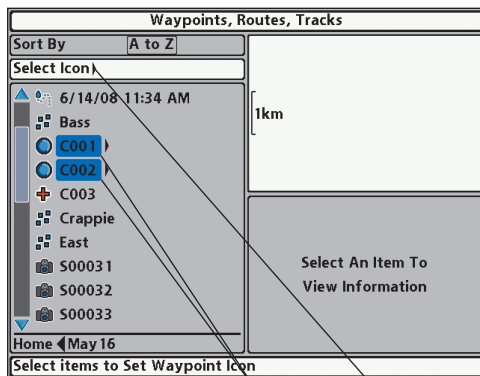
3. Select Save, and press the RIGHT Cursor key to confirm your changes.

Set the Icon for Multiple Select Waypoints

Use the following instructions if you want to change the icon for several waypoints at once. To change the icon for all new waypoints, see *Waypoints: Program the Waypoint Icon & Category Default*.

1. In the WRT dialog box, Select Options > Select Multiple and... > Set Waypoint Icon.
2. **Select Waypoints:** Press the UP or DOWN Cursor keys to scroll through the waypoints. To select a waypoint, press the RIGHT Cursor key. The selected waypoints are highlighted in blue. Repeat as needed.
3. **Select Icon:** Press the EXIT key to highlight Select Icon, and press the RIGHT Cursor key.
4. **New Waypoint Icon:** Use the 4-WAY Cursor Control key to set the Icon Category and Icon fields. Select Save and press the RIGHT Cursor key to confirm your changes.

Changing Selected Waypoints



*Selected Waypoints
(highlighted in blue)*

*Press the RIGHT Cursor
key to assign an icon to
the selected waypoints*



Routes

You can customize your saved routes, and you can also create new routes from scratch using your saved waypoints.

Display the Routes Submenu

The Routes submenu allows you to create a new route or edit a saved route. You can also change the route travel order and start navigation from this submenu.

Viewing Route Information

| Route Info: 04 | | |
|--|--------|-------|
| | | |
| <div> <div>▲</div> <div>Current Position</div> <div>▼</div> </div> | | |
| 025 | 25.5km | 073°t |
| 024 | 5214km | 264°t |
| C8229d | 5191km | 084°t |
| 025 | 25.5km | 073°t |
| 024 | 25.5km | 253°t |
| | | |
| 6 Waypoints | | |
| Created: 11:31:26 AM 6/14/08 | | |

1. From the WRT dialog box, select a route and press the RIGHT Cursor key.
2. Press the DOWN or UP Cursor keys to choose from the submenu, and press the RIGHT Cursor key to select the menu option.

Open: Displays the saved waypoints in the route. You can also change the waypoint order from this dialog box (see *Routes: Edit the Waypoint Order in a Route*).

Travel: Starts navigation on the selected route in forward or reverse. See *Routes: Start Route Navigation*.

Add/Remove: Copies waypoints into the route, or deletes waypoints from the Route. See *Routes: Add/Remove Waypoints*.

Edit: Opens the Edit Route dialog box. You can change the Route name, whether it is shared or locked across InterLink™, and whether it is shown or hidden on Chart Views (see *Routes: Edit a Route*).

Delete: Deletes the route. To delete the route from the current group, choose Selected. To delete the route from all groups, choose All instances.

Duplicate: Creates an instance of the route and adds it to a new group or location in the WRT dialog box. See *Organize*.

Save As: Creates a new route (based on the selected route) and opens a dialog box so you can change the new route's name. To change more information about the route, select Edit and see *Customize a Group, Waypoint, Route, or Track*.

Move: Relocates the route from the selected group to a new group (see *Organize*).

Info: Opens the Route Info box and displays the waypoints in the route, with the distance and bearing from each waypoint to the next, as well as the distance and bearing from the current position to the first waypoint in the route. To change the information in a Route, see *Routes: Edit a Route*.

Create a New Route

1. **Select Save Location:** In the WRT dialog box, choose where you want to save the new route. Home is the highest level group, or the main directory, in the WRT dialog box. The current group is where the new data will be saved.
2. Select Options > New > New Route.
3. **New Route Dialog Box:** Use the 4-WAY Cursor Control key to set the available fields (see *Customize a Group, Waypoint, Route, or Track*). You can name the route, set the InterLink™ share or lock, and set the route to hidden or visible on the Chart Views.

Creating a New Route

| New Route | |
|------------------------------|-------------------------------------|
| Name | RT 005 |
| Shared | <input checked="" type="checkbox"/> |
| Visible | <input type="checkbox"/> |
| Plan Route > | |
| Created: 12:32:44 PM 6/14/08 | |

Select Plan Route and press
the RIGHT Cursor key

4. **Plan Route:** Select Plan Route and press the RIGHT Cursor key. The New Route dialog box closes so that you can select waypoints from the WRT dialog box.
5. **Add Waypoints:** Press the UP or DOWN Cursor keys to scroll through the available waypoints. To add a waypoint to the Route, press the RIGHT Cursor key. Repeat as needed. See the illustration *Adding Waypoints to a Route*.
6. **Save:** When you are finished adding waypoints to the route, press the EXIT key to select Save. Press the RIGHT Cursor key to confirm.

Edit a Route

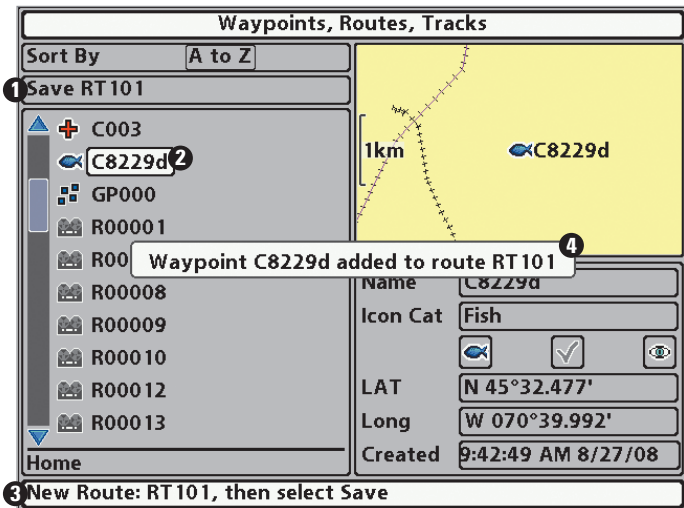
The WRT dialog box allows you to customize a route name, add or remove waypoints, and change the travel order for navigation.

1. From the Route submenu, select Edit and press the RIGHT Cursor key.
2. Use the 4-WAY Cursor Control key to edit the available fields (see ***Customize a Group, Waypoint, Route, or Track***).
3. Select Save, and press the RIGHT Cursor key to confirm your changes.
4. To add waypoints to the route, or delete waypoints from the route, see ***Routes: Add/Remove Waypoints***.
5. To change the travel order in a route, see ***Routes: Edit the Waypoint Order in a Route***.

Add/Remove Waypoints

Add/Remove allows you to copy waypoints into a route or delete waypoints from a route.

Adding Waypoints to a Route



1 Save: Press the EXIT key to choose Save. Press the RIGHT Cursor key to confirm the save.

2 Selected Waypoint: Press the RIGHT Cursor key to add it to the Route

New Route Information: Shows the Route's name and next steps

A **confirmation** displays each time you add a waypoint to the Route

1. Select a Route from the WRT dialog box and press the RIGHT Cursor key. Select Add/Remove from the submenu, and press the RIGHT Cursor key. The submenu will close.
2. **Add:** Press the UP or DOWN Cursor keys to choose a waypoint, and press the RIGHT Cursor key to add it to the route. Repeat as needed. See the illustration **Adding Waypoints to a Route**.

NOTE: When you add a waypoint to a route, it is an "instance" or a duplicate. If you make changes to the instance, the changes will be made to all instances.

Remove: Press the RIGHT Cursor key to open the selected route. Select a waypoint and press the RIGHT Cursor key to delete it from the route. It will be deleted immediately. Repeat as needed.

3. **Save:** When you are finished adding items or deleting waypoints, press the EXIT key to select Save. Press the RIGHT Cursor key to confirm.

Edit the Waypoint Order in a Route

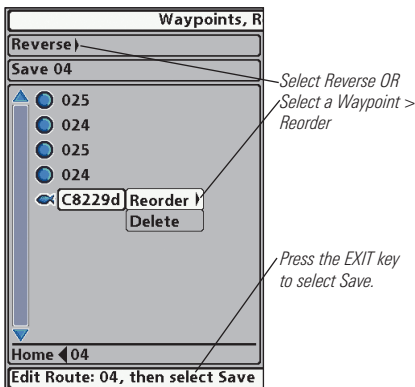
1. From the Routes submenu, select Open.
2. **There are two ways to edit the waypoint order: Select Reverse,** and press the RIGHT Cursor key. This will quickly reverse the order of the route.

OR

Choose a Waypoint in a route, and press the RIGHT Cursor key. Select Reorder, and press the RIGHT Cursor key. To move the waypoint up or down in the route order, press the UP or DOWN Cursor keys.

3. Press the EXIT key to select Save. Press the RIGHT Cursor key to confirm.

Changing the Waypoint Order in a Route (two options)



Start Route Navigation

1. From the Routes submenu, select Travel.
2. **Forward:** To travel the route in order, select Forward. Press the RIGHT Cursor key.
Reverse: To travel the route in reverse order, select Reverse. Press the RIGHT Cursor key.
3. Navigation begins immediately. The WRT dialog box will close so that you can see the route on the chart views.



Tracks

Save and customize your tracks with the WRT dialog box. The Tracks submenu allows you to edit the track name, appearance, and the track visibility. You can also move tracks from one group to another group.

Open a Track Submenu

1. Select a track and press the RIGHT Cursor key.
2. Press the DOWN or UP Cursor keys to choose from the submenu, and press the RIGHT Cursor key to select the menu option.

Edit: Opens the Edit Track dialog box. See *Tracks: Edit a Saved Track* for details.

Delete: Deletes the track. To delete the track from the group, choose Selected. To delete the track from all groups, choose All Instances.

Duplicate: Creates an instance of the track and adds it to a new group in the WRT dialog box (see *Organize*).

Save As: Creates a new track (based on the selected track) and opens a dialog box so you can change the new track's name. To change more information about the track, such as the visibility, or appearance, see *Tracks: Edit a Saved Track*.

Move: Relocates the track from the selected group to a new group (see *Organize*).

Edit a Saved Track

1. Select Edit from the Track submenu, and press the RIGHT Cursor key.
2. Use the 4-WAY Cursor Control key to edit the available fields (see ***Customize a Group, Waypoint, Route, or Track***).

NOTE: In the Style field, if you want the track to display by depth, choose color by depth. If you want the track to display as a line style, choose the line style. The track color field is only available with a line style.

3. Select Save, and press the RIGHT Cursor key to confirm your changes.

Editing a Saved Track

Edit Track

Name 6/14/08 11:34 AM

Visible

Style

Color

Save

129 Trackpoints

Created: 11:34:09 AM 6/14/08

Show or Hide the
Track on Chart Views

Appearance:

Choose Color by Depth or a line style.
Line Style allows you to also choose a track color.

Options

The Options submenu at the top of the WRT dialog box not only includes settings to create new groups, waypoints, and routes, it includes some other menu options to help you manage your navigation items. You can enter search criteria, you can also select several items and apply settings to them at the same time.

***NOTE:** The Options row will also change to match the current action, such as Paste here or Save. See **What's on the WRT Dialog Box** for more information.*

Open the Options Submenu:

Select Options and press the RIGHT Cursor key to open the submenu.

Set as Default: Sets the selected Group as the default directory. See ***Groups: Set a Group as the Default Directory.***

New: Creates a new Group, Waypoint, or Group.

Select Multiple and...: Allows you to select more than one navigation item and apply settings or actions to them at the same time. You can Delete, Export, Duplicate, Move, Share or Lock (across InterLink™), Show or Hide (on Chart Views), or Set the Waypoint Icon. For an example, see ***Organize: Export Selected Navigation Items or Waypoints: Set the Icon for Multiple Select Waypoints.***

Search By: Allows you to search by Name, Distance, Date, Icon, or Icon Category. Select one of the submenu options and press the RIGHT Cursor key. Use the 4-WAY Cursor Control key to enter your search criteria in the dialog box, select Enter, and press the RIGHT Cursor key to start the search.

Select All and...: Allows you to apply settings or actions to all of the items in the selected group at one time. You can Delete, Export, Share, Lock, Show, or Hide. To apply settings/actions to all of the items in the WRT dialog box, start from the Home Group. For an example see ***Organize: Export ALL Navigation Items.***

Organize

After your day of fishing, or while you're on the water, you might want to move your waypoints, routes, and tracks into a designated group, or you might want to copy your favorite waypoints into other routes or groups. You can even export your navigation items to an unlocked, installed SD card and then view them in HumminbirdPC™.

Duplicate or Move

Follow the same steps to move or duplicate a waypoint, route, or track. Groups can be moved, but they cannot be duplicated.

1. Select Move or Duplicate from the waypoint, route, or track submenu. Press the RIGHT Cursor key. The current item is highlighted in blue.

Duplicate: Creates an instance of the the waypoint, route, or track so that it appears in more than one group (all items) or route (waypoints only).

***NOTE:** When you make changes to a duplicated item, the changes are applied to all instances. To make a copy and set the item apart from its duplications, use Save As.*

Move: To delete the group, waypoint, route, or track from one group and transfer it into another group, select Move.

2. Use the 4-WAY Cursor Control key to browse to the new group or route. The selected destination is highlighted in white. Press the EXIT key to select Paste here and press the RIGHT Cursor key to confirm. See the illustration ***Moving a Waypoint to a Group.***

Create a Copy and Save as a New Item

1. Select Save As from the waypoint, route, or track submenu. Edit the name fields.
2. Select Save and press the RIGHT Cursor key. The new item retains the properties from the original, but you can edit the new item so it will not be affected by changes to the original.

Export ALL Navigation Items

You can export all of your navigation items to an installed, unlocked SD card.

1. Select Options > Select All and... > Export.
2. Follow the screen instructions to confirm or cancel the export.

Export Selected Navigation Items

You can also select specific navigation items and export them to an installed, unlocked SD Card.

1. From a selected group directory in the WRT dialog box, select Options > Select Multiple and... > Export.
2. **Select Items:** Press the UP or DOWN Cursor keys to scroll through the waypoints, routes, and tracks. Press the RIGHT Cursor key to select. Repeat as needed. See the illustration *Selecting Multiple Items for Export*.
3. **Confirm Export:** When you are finished selecting items, press the EXIT key to select Export Selected. Press the RIGHT Cursor key and follow the screen instructions to confirm or cancel the export.

Contact Humminbird®

Contact the Humminbird® Customer Resource Center
in any of the following ways:

By Telephone:

(Monday - Friday 8:00 a.m. to 4:30 p.m. Central Standard Time):

1-800-633-1468

By e-mail:

(typically we respond to your e-mail within three business days):

service@humminbird.com

For direct shipping, our address is:

Humminbird

Service Department

678 Humminbird Lane

Eufaula, AL 36027 USA



HUMMINBIRD®